



city of CREVE COEUR

300 North New Ballas Road • Creve Coeur, Missouri 63141
(314) 432-6000 • Fax (314) 872-2539 • Relay MO 1-800-735-2966
www.creve-coeur.org

NOTICE OF PUBLIC HEARING

APPLICATION TO PLANNING AND ZONING COMMISSION #17-033 FOR AN AMENDMENT TO THE CITYPLACE CAMPUS MASTER SIGN PLAN TO ALLOW A FREESTANDING LEASE INFORMATION SIGN

FOR THE MEETING OF: Monday, November 6, 2017, 6:30 PM

LOCATION: CityPlace Campus (see attached map). The properties are zoned CB-Core Business

REQUEST: Chris Woods, of Redico, on behalf of RNSI CityPlace Owner, LLC, has submitted an application to amend the master sign plan for the entire CityPlace Campus. Section 405.950.J. Master Sign Plans, allows the City Council the flexibility to approve additional signs for planned developments and large campus developments of three or more buildings with a minimum of ten acres, subject to certain requirements and conditions. The application would allow for an additional real estate sign for the CityPlace Retail Building at 11615 Olive Boulevard.

ADDITIONAL INFORMATION: The Planning and Zoning Commission is scheduled to review the application on Monday, November 6, at 6:30 PM for recommendation to the City Council. All meetings are held in the Council Chambers of the Creve Coeur Government Center located at 300 North New Ballas Road. All reports, plans, documents, and related materials may be viewed at the Creve Coeur Government Center and on the City's website at www.creve-coeur.org, under the Current Planning Projects page.

We encourage you to attend if you have any questions or wish to make a statement. In addition, you can submit written or e-mail comments in advance or at the meeting. For information about this proposal or to verify the meeting schedule, please call (314) 872-2501 or e-mail wkelly@crevecourmo.gov.

Key Issues:

- Does the request further the goals and/or implement the Comprehensive Plan?
- Does the request follow the Design Guidelines?
- Does the request meet with the intent of the City's Sign Regulations?

Comp. Plan References

- Central Business District

Zoning Code References

- Section 405.950 Signs in Non-Residential Districts

APPLICANT: Chris C. Woods
Redico
2 CityPlace Dr., Suite 460
Creve Coeur, MO 63141

PROPERTY OWNER:

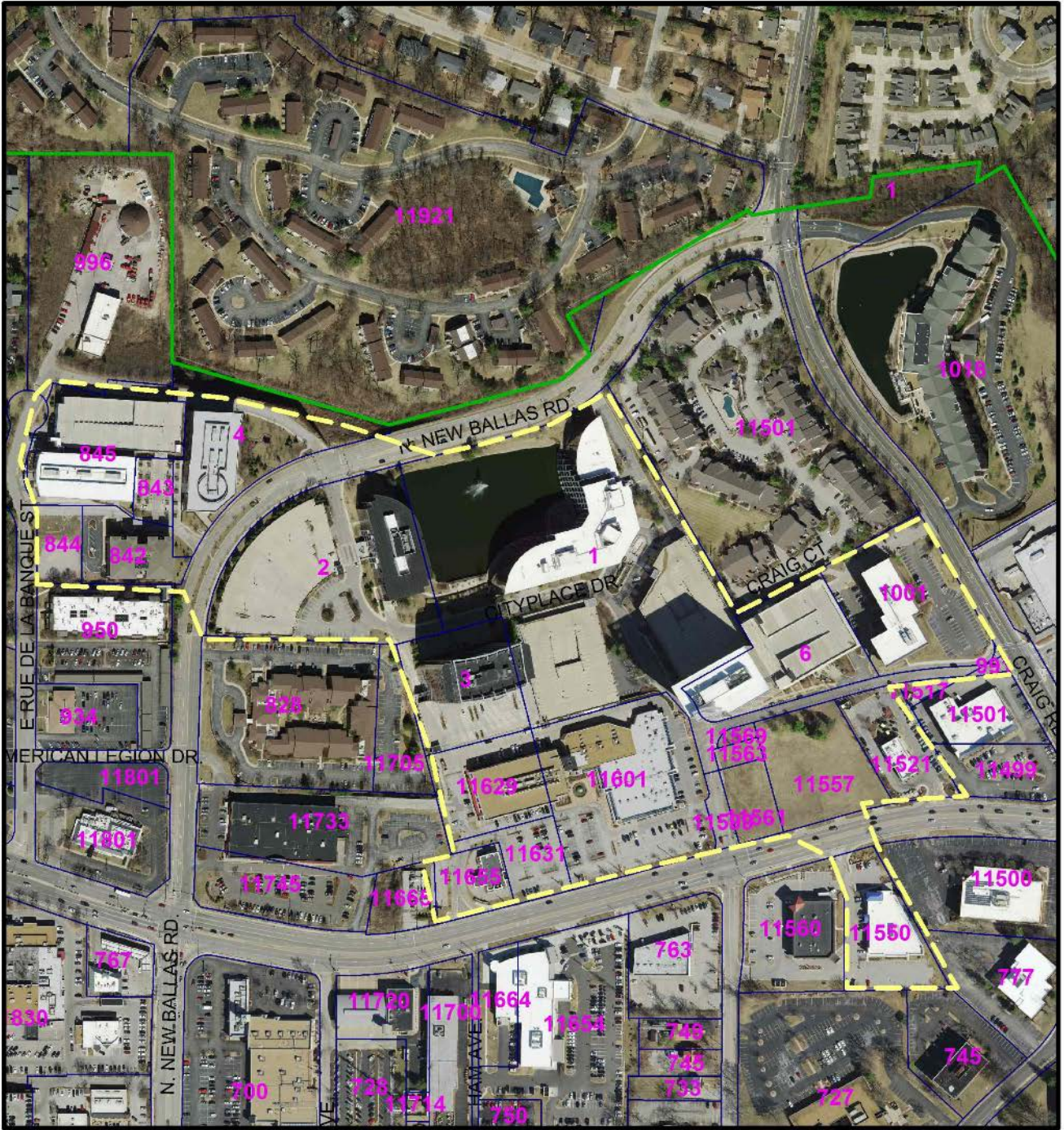
RNSI
One Towne Square, Suite 1600
Southfield, MI 48076



STAFF CONTACT: Whitney Kelly, City Planner

CC: Ted Ruzicka and Ellen Lawrence, Ward II

Aerial Photo



-  CityPlace Campus
-  Property Lines
-  Creve Coeur Municipal Boundary

